

## Escape Handcuffs

## Handcuffs

**PLEASE DO NOT PUT THE HANDCUFFS ON YOURSELVES. I HAD A SLIGHT INCIDENT WITH A STUCK KEY.**

**The dismembered limbs are for your safety.**  
**Use them.**

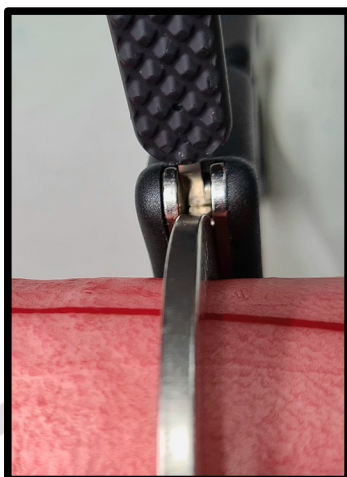
### How Do Handcuffs Work?

**A ratchet.** Interlocking teeth which can slide over each other one way and lock the other. The **teeth in the body of the cuff are retracted by the key.**



### How Can We Escape?

**By shimming.** We can insert a piece of thin metal between the teeth so they don't interlock.



### Surely It's Not This Easy?

Well, no. They should be **double locked** to stop this happening but it's not always done.

Additionally, shimming with the cuffs behind you is quite tricky and you can **often have to tighten the cuffs** to allow the shim to pass.

The correct size shim is not usually available in the back of a police van.

**Enquiries@StyxSecurity.org**

**We don't knock.**